



# Component Replacement

## - electrical -



**Aspen**  
**M1i, M1a**

# CONTENTS

<b>1</b>	<b>Replaceable Components .....</b>	<b>3</b>
<b>2</b>	<b>Component Placing.....</b>	<b>5</b>
<b>3</b>	<b>Repair Actions .....</b>	<b>6</b>
	<b>3.1 Shield Can Fence Modifications .....</b>	<b>6</b>
	<b>3.2 Additional Repair Info .....</b>	<b>7</b>
<b>4</b>	<b>Revision History .....</b>	<b>12</b>

***For general information about electrical repair related issues, refer to  
1220-1336: Generic Repair Manual - electrical***



# 1 Replaceable Components

## EXPLANATION OF ABBREVIATIONS USED IN THE COLUMN 'COMMENTS' BELOW

### **COMPONENT LOCATION**

**P** = Primary side

**S** = Secondary side

### **MOISTURE SENSITIVITY LEVEL**

**MSLX** (X = 1, 2, 2A, 3, 4, 5, 5A or 6)

*For more information on moisture sensitivity levels:*

*Refer to 1220-1336: Generic Repair Manual – electrical, section 'Moisture & Baking'!*

### **REPAIR METHOD**

**HA** = Hot Air (removal & mounting)

**ST** = Soldering Tool (removal & mounting)

**HA/ST** = Hot Air for removal - Soldering Tool for mounting

**BGA** = BGA Station

**BH** = Bottom Heater

### **ADDITIONAL INFORMATION**

⇒1 (2,3,4, etc.) = Proceed to 'Additional Repair Info' for further instructions in the indicated section(s).

### **CALIBRATION**

**C** = Calibration of the phone is required after replacing the component

*Calibration to be done by authorized centers only!*



## Component Replacement (elect)

Position	Component	Part no.	Comments
AL106	Inductor 500mA #25%	6801219C003	P ST
AL107	Inductor 500mA #25%	6801219C003	P ST
AL201	Inductor 200mA #25%	6801820Y003	P ST
AL204	Inductor 200mA #25%	6801820Y003	P ST
AL205	Inductor 200mA #25%	6801820Y003	P ST
CN1	Audio Jack	1230-4119	P HA/ST ⇨1
CN1101	Micro USB Socket	1230-4117	P HA,BH ⇨17
CN1102	SIM Socket	1230-4116	P HA/ST ⇨2
CN1402	Card Conn Micro SD push-push	1222-1396	P HA,BH ⇨3
D1304	LED Blue	1201-9197	S HA/ST
FML201	Inductor	F68139044111	P ST
LCN1	Connector FPC	1230-4120	P HA,BH ⇨4
LCN2	Connector 4pin	620L0G20004	S HA/ST ⇨15
LED1201	LED White 1.8*0.6mm, height 0.3mm	1204-6085	S HA/ST
LED1202	LED White 1.8*0.6mm, height 0.3mm	1204-6085	S HA/ST
LED1203	LED White 1.8*0.6mm, height 0.3mm	1204-6085	S HA/ST
LED1204	LED White 1.8*0.6mm, height 0.3mm	1204-6085	S HA/ST
LED1205	LED White 1.8*0.6mm, height 0.3mm	1204-6085	S HA/ST
LED1206	LED White 1.8*0.6mm, height 0.3mm	1204-6085	S HA/ST
MIC101	Microphone	1226-6276	S HA
PC1630	Capacitor 33mF 3.3V	1228-1501	P HA/ST ⇨5
PCON1601	Battery Connector	620G0B00003	P HA/ST ⇨16
PL1308	22uH 20% 3x3x1.2mm 0.375A 0.63ohm	1000-3334	P HA ⇨6
Q1101	MOS_P#8V_SC89	610100PG33Z	P HA/ST ⇨6
SW1003	Switch	6304A000007	P HA/ST ⇨7
SW1004	Switch	1231-8414	P HA/ST ⇨8
SW1006	Switch	6304A000007	P HA/ST ⇨9
SW901	Switch Reset	1231-8410	P HA/ST ⇨10
SPRING1	SPRING	440FAI2300A	P HA ⇨11
U1303	IC Vreg PLP1010-4	1202-5945	P HA ⇨12
WABS1	SPRING	440FAI2300A	P HA ⇨9
WAPS1	SPRING	440FAI2300A	P HA ⇨2
WQCN0101	Conn Coax Receptacle 0p test switch	1221-6477	P HA/ST ⇨13
WWL1401	Conn Coax Receptacle 0p test switch	1221-6477	P HA/ST ⇨14
X1601	Crystal	1000-0036	P HA

## 2 Component Placing

To access the Component Placing document, double-click the icon below.  
Applicable for on-screen viewing only – icon not shown on hard-copies.





## 3 Repair Actions

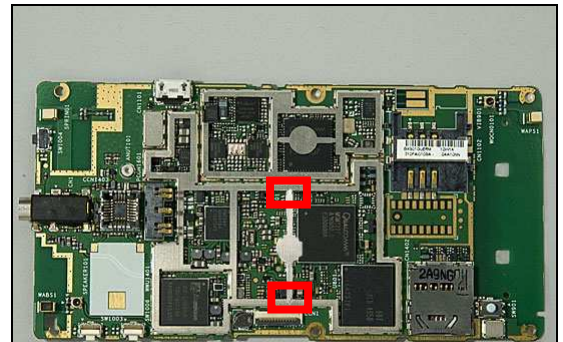
**Refer to the Tools Catalogue/Matrix for information about equipment required for PBA repair!**

### 3.1 Shield Can Fence Modifications

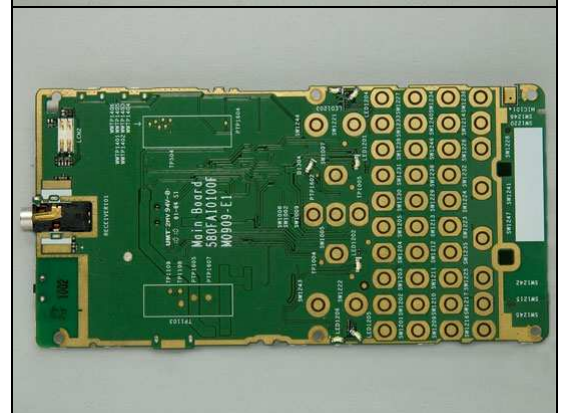
Refer to picture below of the primary side for repairs:

- The shielding cover has to be removed
- The red symbols show where the shielding frame should be cut to enable rework
- After rework the height of the frame should not be affected
- It should not be visible that rework has been carried out when the shielding cover has been mounted

*Primary side*



*Secondary side*







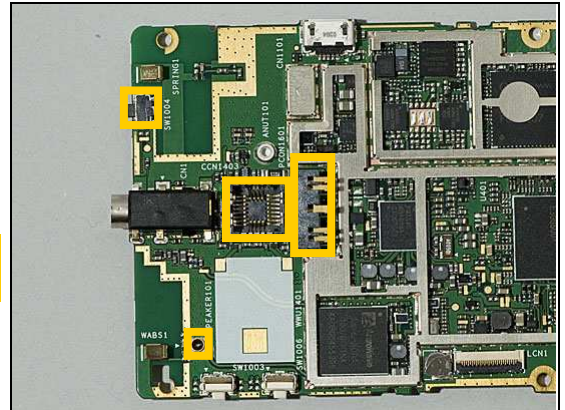
## Repair Actions

### 3.2 Additional Repair Info

1

CN1

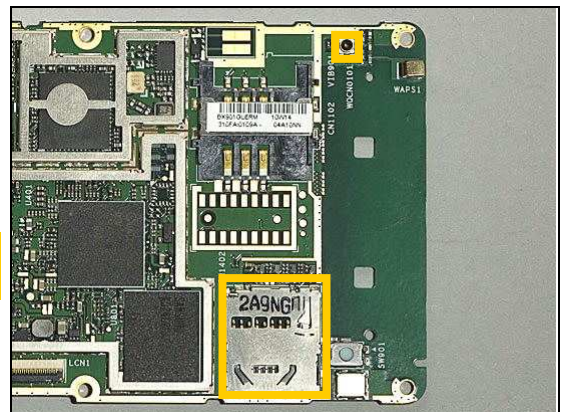
**Protect the antenna connector, Camera module, Battery connector and Power-key with capton tape!**



2

CN1102,WAPS1

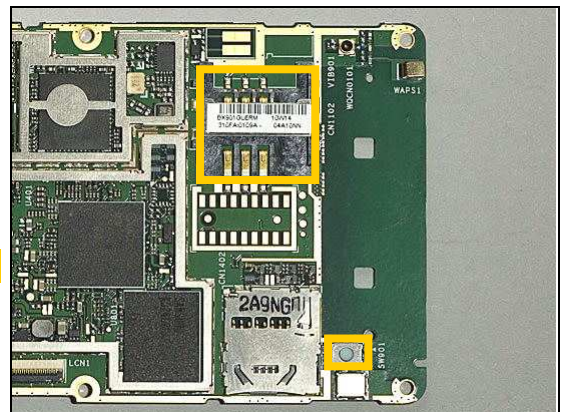
**Protect the antenna connector and Micro-SD slot with capton tap!**



3

CN1402

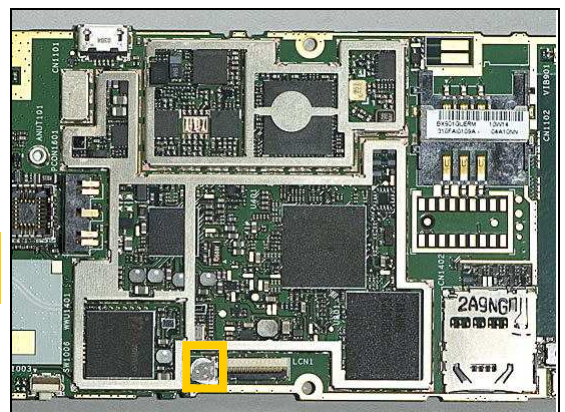
**Protect reset key and SIM slot with capton tap!**



4

LCN1

**Protect Backup battery with capton tap and hot-air temperature should not over 260 °C!**

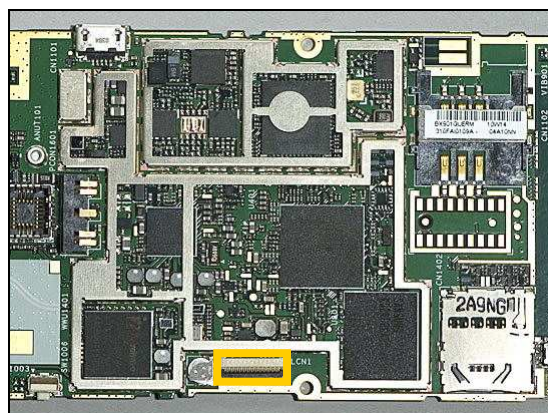


## Repair Actions: Additional Repair Info

5

PC1630

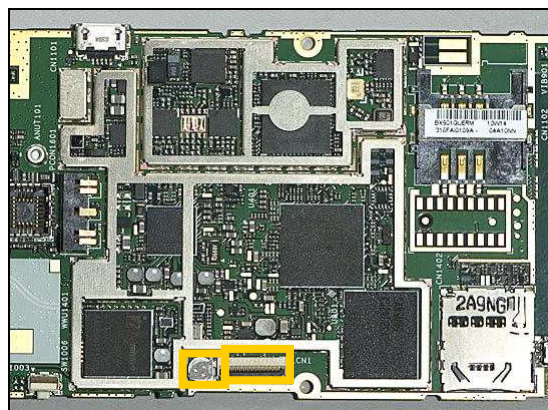
**Protect LCM connector with capton tap and hot-air temperature should not over 260°C!**



6

Q1101, PL1308

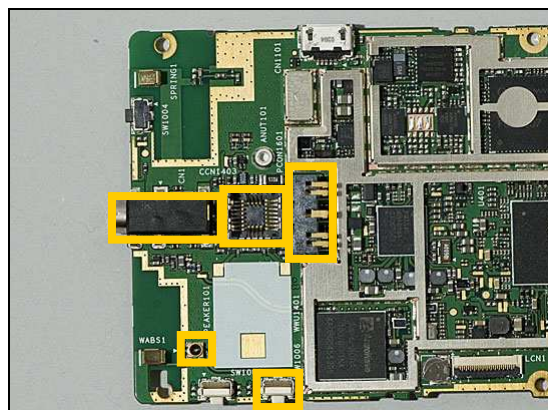
**Protect Backup battery and LCM connector with capton tap!**



7

SW1003

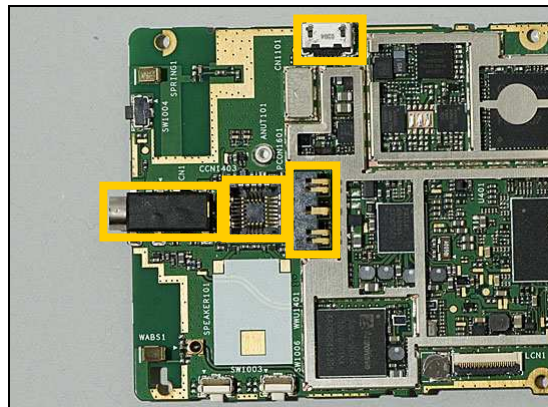
**Protect Ear-phone jack, Camera socket, battery connector, antenna connector and Volume-down key with capton tap!**



8

SW1004

**Protect Ear-phone jack, Camera socket, battery connector and Micro-USB connector with capton tap!**





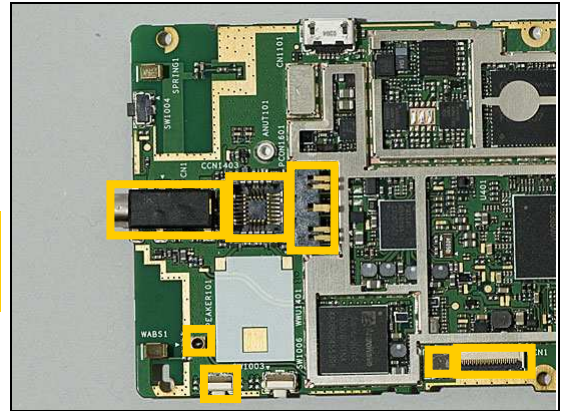


## Repair Actions: Additional Repair Info

9

SW1006,WABS1

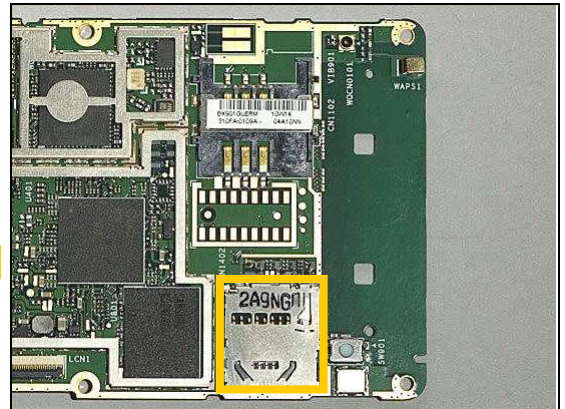
**Protect antenna connector, Volume-up key, Ear-phone jack, Camera socket, battery connector, backup battery and LCM connector with capton tap!**



10

SW901

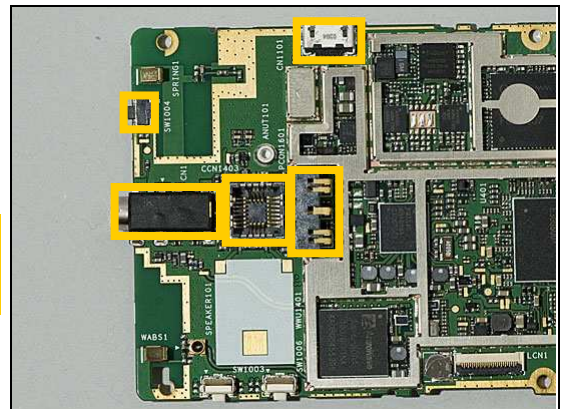
**Protect Micro-SD slot with capton tap!**



11

SPRING1

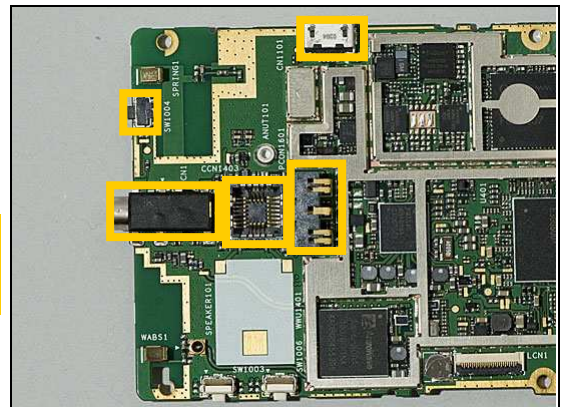
**Protect Power key, Ear-phone jack, Camera socket, battery connector and Micro-USB connector with capton tap!**



12

U1303

**Protect Ear-phone Jack, Camera module, Battery connector, Micro-USB connector and Power key with capton tap!**

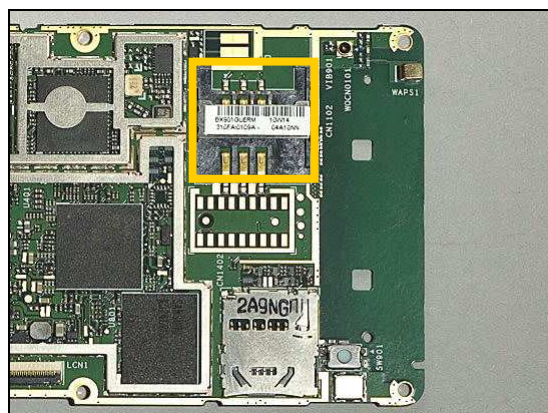


## Repair Actions: Additional Repair Info

13

WQCN0101

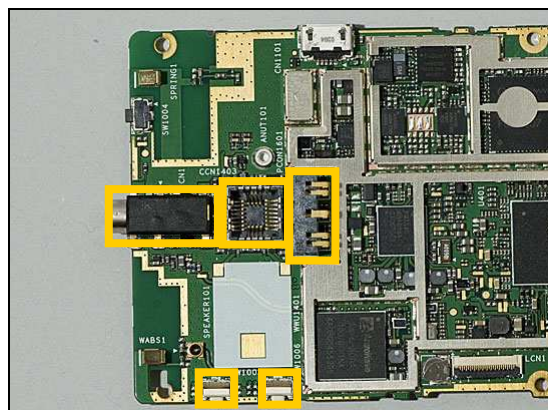
**Protect SIM slot with capton tap!**



14

WWL1401

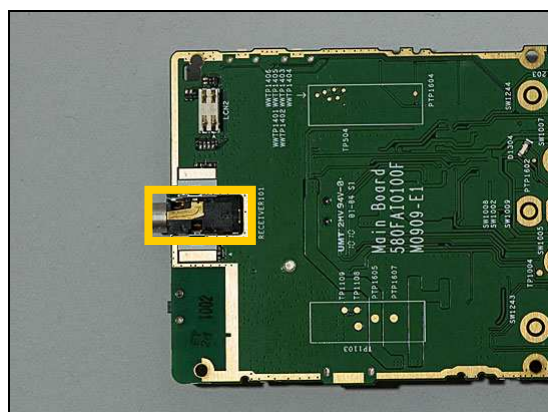
**Protect Ear-phone jack, Camera socket, battery connector, Volume-up key and Volume-down key with capton tap!**



15

LCN2

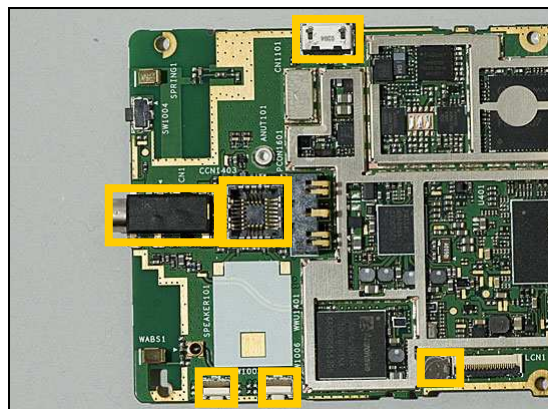
**Protect Ear-phone jack with capton tap!**



16

PCON1601

**Protect Ear-phone jack, Camera socket, Volume-up key, Volume-down key, backup battery and Micro-USB connector with capton tap!**

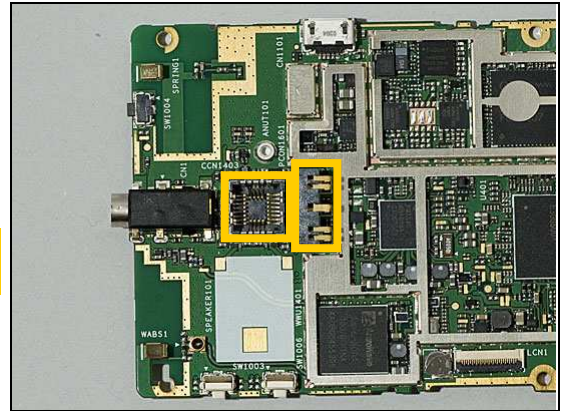


### Repair Actions: Additional Repair Info

17

**CN1101**

***Protect Camera socket, battery connector with capton tap!***





## 4 Revision History

Rev.	Date	Changes / Comments
1	2010-Jun-14	Initial release
2	2010-Jun-22	No Update